

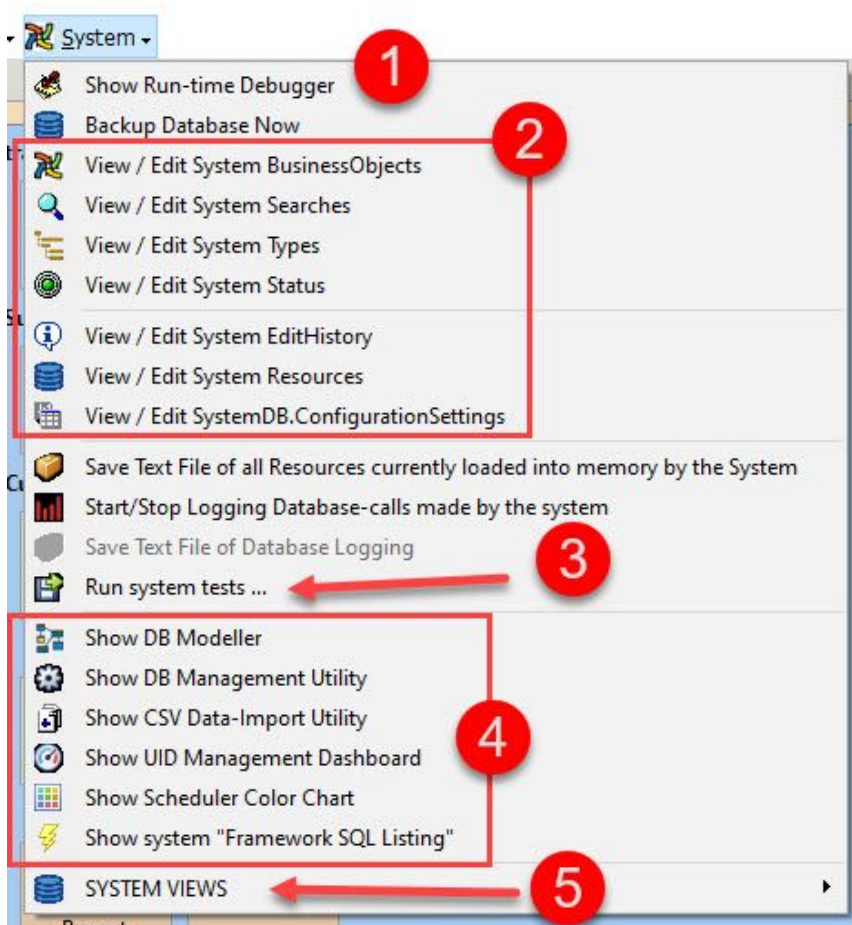
Administrator Guide: The System Menu

This section of the help system covers topics for more advanced users intending to extend and develop the features of their system.

Please refer to items below this section-heading for topics such as:

1. How to manage and back up data, how and where the Orixa database stores data on your server.
2. How to extend your system with new features such as reports, dashboards, searches and actions.
3. How to add new data-entities, tables and fields to the database, and how to ensure these follow Orixa framework requirements so they link and work with other entities in your system.
4. How to write stored procedures on the database which can be accessed and run from within your Orixa Application.

The System Menu, access point to critical Administrator features



System Menu

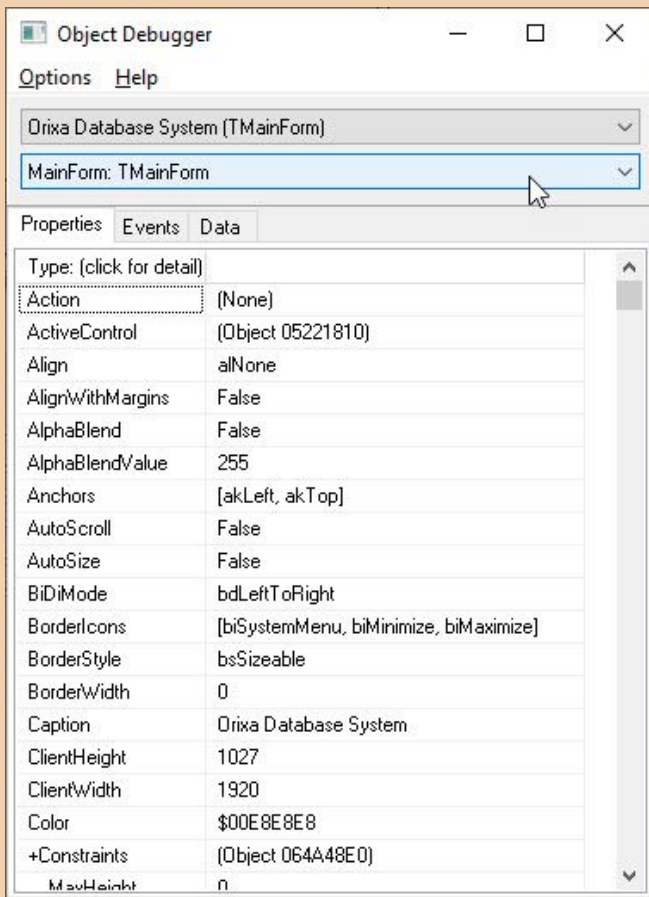
Some of these items are fairly self explanatory, others are detailed below:

Items on the System Menu

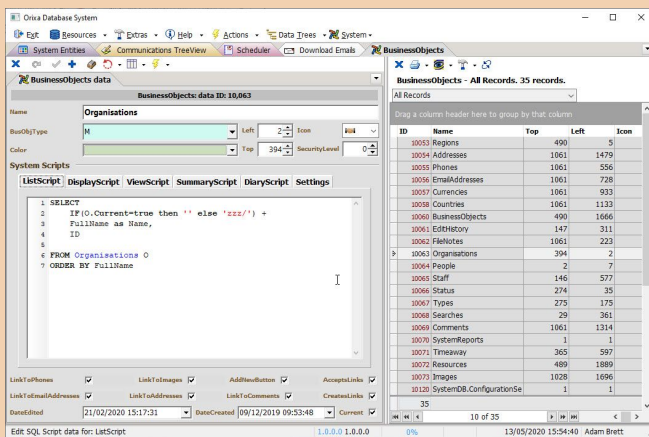
1. Show Run-time debugger

This opens a Window that allows the Admin User to inspect all objects in the App.

Use the drop-down lists at the top of the window to select which screen-item to explore.



Object Debugger



Business Objects data-grid

2. View / Edit System Table "X"

Your App is built from the records in the System-Tables. These are the BusinessObjects, Resources, Status, Types Searches and ConfigurationSettings tables.

When you click on "View / Edit" for any of these, a data-entry system will open for the chosen system-table.

This allows Admin users to edit these records, and alter the way your App works.

The individual operation of these system-tables are detailed elsewhere in the Help.

Here are some links to start with:

[What is a BusinessObject?](#)

[Using the "Resources" system-table to create reports, charts, data-cubes and dashboards](#)

[System Tables: Types and Status](#)

Other useful topics in this area can be found under the "Underlying Concepts of the Orixa Framework Help Item.

3. System Tests

This opens the System Tests window which allows you to test that all the SQL you have written works correctly.

The System Tests Form (shown on the left) allows detailed testing

System Tests Form

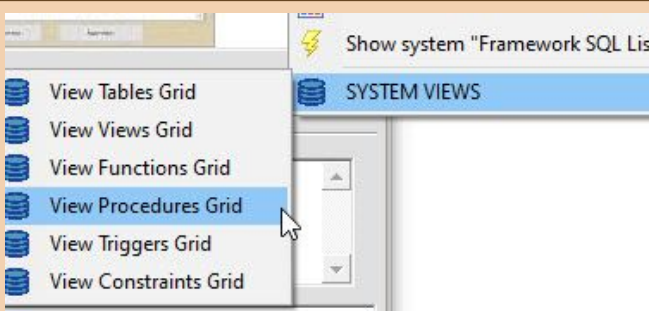
of all parts of the App, it tests fetching data into Edit Forms, showing View-grids, reports etc.

CSV Import Tool

4. Extra Tools

These are dealt with in separate help topics, listed below this one.

The image left shows the CSV Import Utility, which is one of the Admin Tools, others are detailed elsewhere in the Help.



System Views Menu

5. System Views Menu

From this item in the System Menu you can access view-grids which show the content of the database Configuration tables.

